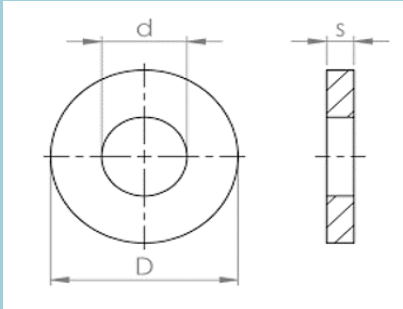


Range of Industrial Washers

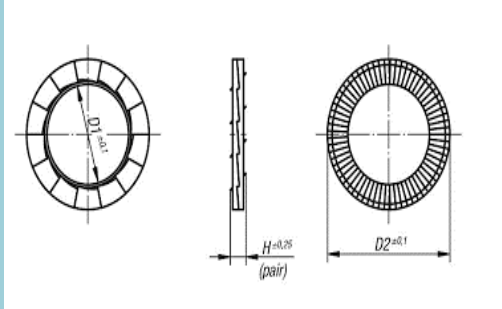
Available Grades and Coatings	Grade	Coating	●
	No Grade	Zinc Plated	●
Fitting Tool	Typically no Fitting tool required	Din 7349 Engineering	●
	Mudguard Repair Washer	A2 Stainless	●
		A4 Stainless	●
		Galvanised	●

Three Sample Specifications for Technical Washers

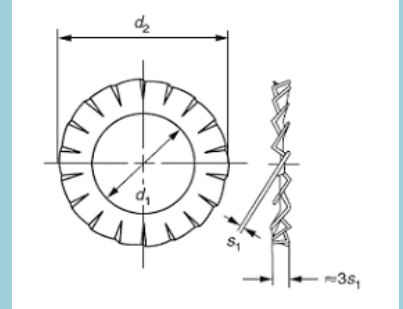
Din 7349 Engineering Washer



Din 25201 Nordlock Washer



Din 6798 Serrated Washer



Din 7349 Engineering Washer



Din 25201 Nordlock Washer

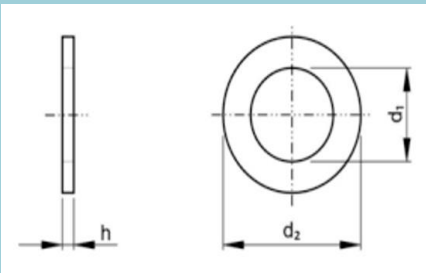


Din 6798 Serrated Washer

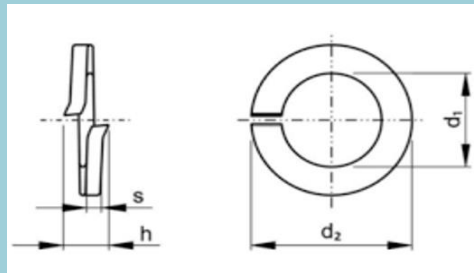


Sample Specifications for Standard Washers

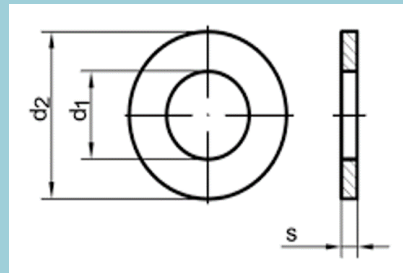
Din 125 Flat Washer



Din 127 Split Washer



Din 9021 Penny Washer



Din 125 Flat Washers



Din 127 Split Washers



Din 9021 Wide Washers



Industrial Washers

The Bolt Company	Product sizes and most standard finishes										
	Size	Din 125	Din 127	Din 6916	Din 7349	Din 6796	Din 6798	Din 522	Din 9021	Din 25201	Din 935
		Flat	Split	Heavy Duty	Engineering	Conical	Serrated	Penny	Wide	Nordlock	Mudguard
		Zinc	Zinc	Black	Zinc	Zinc	Zinc	Zinc	Zinc	Zinc	Zinc
M3	●	●	●	●	●	●	●	●	●	●	M5 3/16 X 1 ●
M4	●	●	●	●	●	●	●	●	●	●	M6 1/4 X 1 ●
M5	●	●	●	●	●	●	●	●	●	●	M6 1/4 X 1-1/4 ●
M6	●	●	●	●	●	●	●	●	●	●	M6 1/4 X 2 ●
M8	●	●	●	●	●	●	●	●	●	●	M8 5/16 X 1 ●
M10	●	●	●	●	●	●	●	●	●	●	M8 5/16 X 1-1/4 ●
M12	●	●	●	●	●	●	●	●	●	●	M8 5/16 X 1-1/2 ●
M14	●	●	●	●	●	●	●	●	●	●	M8 5/16 X 8 ●
M16	●	●	●	●	●	●	●	●	●	●	M10 3/8 X 1 ●
M18	●	●	●	●	●	●	●	●	●	●	M10 3/8 X 1-1/4 ●
M20	●	●	●	●	●	●	●	●	●	●	M10 3/8 X 1-1/2 ●
M22	●	●	●	●	●	●	●	●	●	●	M12 1/2 X 1-1/2 ●
M24	●	●	●	●	●	●	●	●	●	●	
M27	●	●	●	●	●	●	●	●	●	●	
M30	●	●	●	●	●	●	●	●	●	●	
M33	●	●	●	●	●	●	●	●	●	●	
M36	●	●	●	●	●	●	●	●	●	●	
M39	●	●	●	●	●	●	●	●	●	●	
M42	●	●	●	●	●	●	●	●	●	●	
M45	●	●	●	●	●	●	●	●	●	●	
M52	●	●	●	●	●	●	●	●	●	●	

Graphic's

Din 555 Mudguard Washer



The Bolt Company	Product sizes and most standard finishes										
	Size	Din 125	Din 127	Din 7349	Din 6798	Din 6796	Din 9021	Din 522	Din 125	Din 127	
		Flat	Split	Engineering	Serrated	Conical	Wide	Penny	Flat	Split	
		A2 Stainless	A2 Stainless	A2 Stainless	Zinc	Zinc	A2 Stainless	A2 Stainless	Stainless A4	Stainless A4	
M3	●	●	●	●	●	●	●	●	●	●	Din 125 Flat Washer ●
M4	●	●	●	●	●	●	●	●	●	●	
M5	●	●	●	●	●	●	●	●	●	●	
M6	●	●	●	●	●	●	●	●	●	●	
M8	●	●	●	●	●	●	●	●	●	●	
M10	●	●	●	●	●	●	●	●	●	●	
M12	●	●	●	●	●	●	●	●	●	●	
M14	●	●	●	●	●	●	●	●	●	●	
M16	●	●	●	●	●	●	●	●	●	●	
M18	●	●	●	●	●	●	●	●	●	●	
M20	●	●	●	●	●	●	●	●	●	●	
M22	●	●	●	●	●	●	●	●	●	●	
M24	●	●	●	●	●	●	●	●	●	●	
M27	●	●	●	●	●	●	●	●	●	●	
M30	●	●	●	●	●	●	●	●	●	●	
M33	●	●	●	●	●	●	●	●	●	●	
M36	●	●	●	●	●	●	●	●	●	●	
M39	●	●	●	●	●	●	●	●	●	●	
M42	●	●	●	●	●	●	●	●	●	●	
M45	●	●	●	●	●	●	●	●	●	●	
M52	●	●	●	●	●	●	●	●	●	●	

Din 125 Flat Washer



Din 127 Split Washer



Din 9021 Wide Washer



Din 7349 Engineering Washer



Din 25201 Nordlock



Ordering Information	Coatings		Colour Key Information	
	Zinc	●	Standard product and is usually readily available	●
Self Colour	●	Non standard needs to be ordered or small stock holding only	●	
Stainless A2	●			
A4 Stainless	●	Non standard typically not available specific enquiry only	●	
Galvanised	●			
Zinc Flake	●			
Brass	●	Products ordered are based on box quantities only which may vary		
Nylon	●			

Selection Notes Washers have a number of uses which include strengthening, load discription, additional tightening and anti vibration. Each washer type has a particular attribute and should be chosed carefully with the primary use deciding the specific washer type.

Technical Data and Photos	Din 6916 Heavy Duty Washer	Din 6798 Serrated Washer	Din 6796 Conical Washer	Din 25201 Nordlock
				